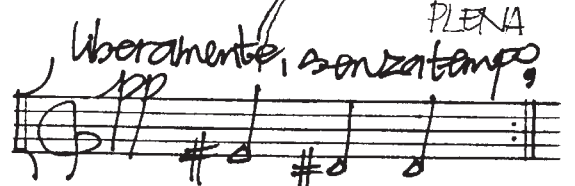
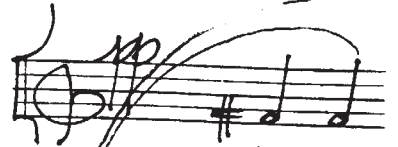
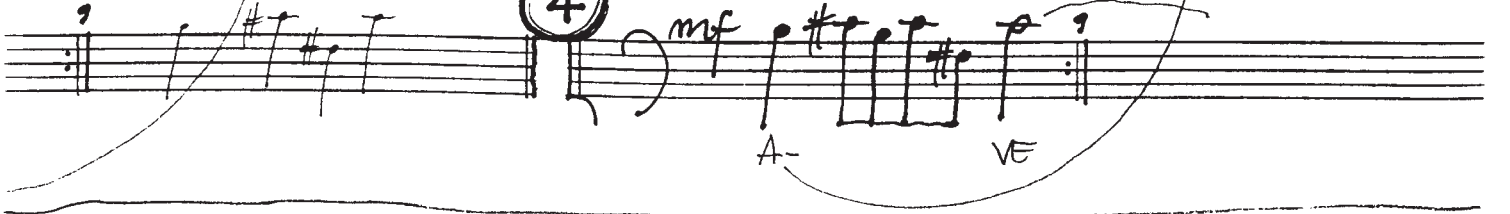
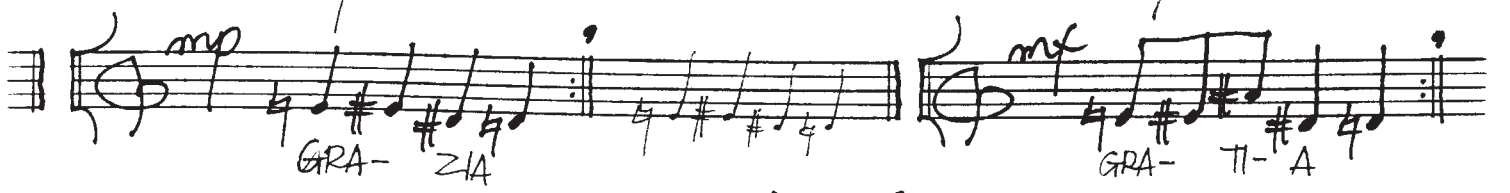
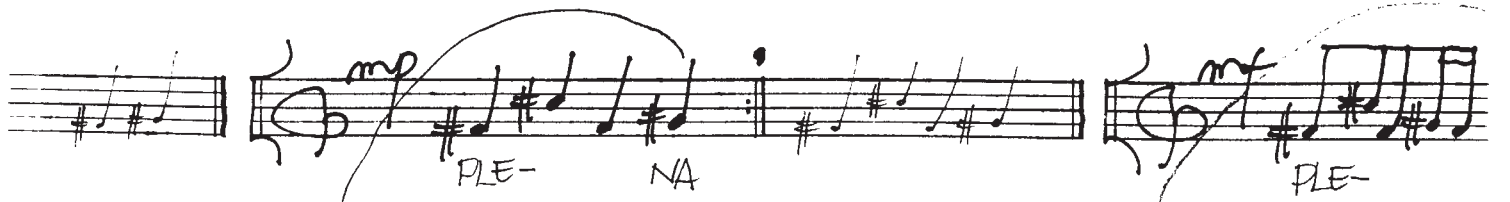
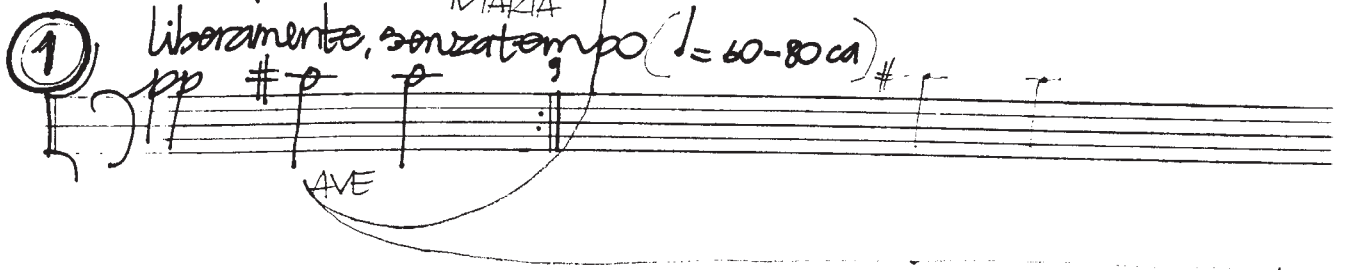


# Ave Maria

liberamente,



luminoso



senza tempo (♩ = 60-80 ca.)

Musical staff with notes and a fermata. Includes a circled '1' at the beginning.

(♩ = 60-80 ca.)

Musical staff with notes and a fermata. Includes the word "PLENA" below the notes.

Musical staff with notes and a fermata. Includes the word "GRATIA" below the notes.

Musical staff with notes and a fermata. Includes the word "MARIA" below the notes.

Musical staff with notes and a fermata. Includes circled numbers '2' and '3', and the word "AVE" below the notes.

Musical staff with notes, a fermata, and the word "rit." above the staff.

Musical staff with notes, a fermata, and the word "rit." above the staff.

Musical staff with notes, a fermata, and circled number '5'. Includes the tempo marking "♩ = 200 ca." and the word "ff" above the staff.

Musical staff with notes and a fermata. Includes the words "DOMINUS TECUM" below the notes.

Musical staff with notes and a fermata. Includes the word "molto" above the staff.

Musical staff with notes and a fermata. Includes the word "poco accel." above the staff.

Musical staff with notes and a fermata. Includes the word "molto" above the staff.

Musical staff with notes and a fermata. Includes the word "poco accel." above the staff.

rit. rit. molto mp

accel. ff

f

6 ff  $\text{♩} = 132 \text{ ca.}$  IN

senza tempo (♩ = 60 ca)

poco rit. f rit. mf

poco rit. f rit. mf

(mf) f

*senza tempo*  
 7  
*p* *mf*  
 -M → ET  
*poco rit.*  
 MULIERIBUS  
*non rit.*  
 TU

*senza tempo*  $\text{♩} = 80 \text{ ca}$   
*mf*  
 ET BENEDICTUS

8  
*senza tempo*  
*mf*  
 IS VENTRIS  
 FRUCTUS VENTRIS TUI  
*mp molto rit.*  
*mp molto rit.*  
*senza tempo*  
*mf*  
 FRUCTUS VENTRIS TUI  
 9  
*mp*  
 (-BUS)  
 (-TU)

Handwritten musical score on three staves. The first staff contains a melodic line with a *rit.* marking and a *breve* section. A circled number "10" is written above the staff. The second and third staves contain two parts of music, both marked *mp*. The text "ET BENEDICTUS" is written between the two parts. The third staff ends with a *rit.* marking and a *breve* section. The tempo marking "senza tem" is written above the staff. The key signature has one flat (B-flat) and the time signature is 4/4. The lyrics "JE-" are written below the notes.

Handwritten musical score on three staves. The first staff contains a melodic line with a *rit.* marking and a *breve* section. The second staff contains a melodic line with a *rit.* marking and a *breve* section. The third staff contains a melodic line with a *rit.* marking and a *breve* section. The tempo marking "senza tem" is written above the staff. The key signature has one flat (B-flat) and the time signature is 4/4. The lyrics "JE-" and "JESU(b)" are written below the notes.

pp

Handwritten musical score for a vocal line. The lyrics are "EUS TE- EUS" and "FRUCTUS VENTRIS TVI". The score includes dynamic markings such as *p* and *mp*, and tempo markings such as *senza tempo*. There are repeat signs and a double bar line at the end of the first phrase.

rit.

**11** insieme  $\downarrow$

Handwritten musical score for a piano accompaniment. It features dynamics such as *pp* and *p*. The score includes a section marked *rit.* and a section marked *tempo*. There are repeat signs and a double bar line. The score ends with the instruction *pppofechini*.